

Nokia Customer Care
RM-8/RM-47/RM-48 Series Transceivers

5 - Disassembly Instructions

Table of Contents

	Page No
Disassembly instructions of lower block	3
Disassembly instructions of upper block.....	6
Domesheet exchange instructions	9

Disassembly instructions of lower block

Also see the video clips on care point.



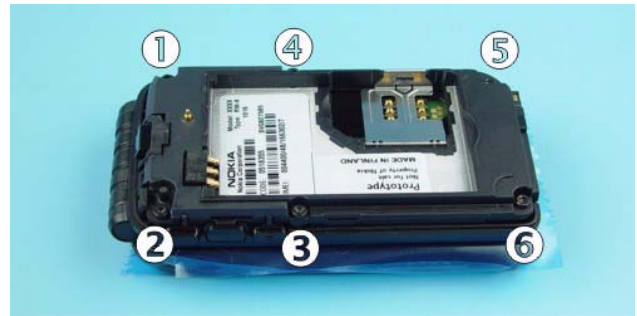
1.) Protect the window with a plastic film.



2.) Open the unit and protect the window of the **Inner LCD** with a plastic film.



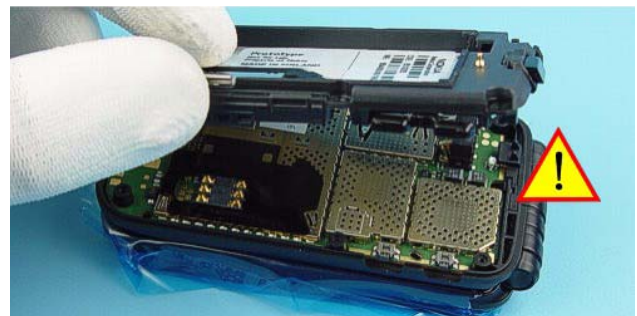
3.) Press the release button and remove the **B-Cover Lower Assy**.



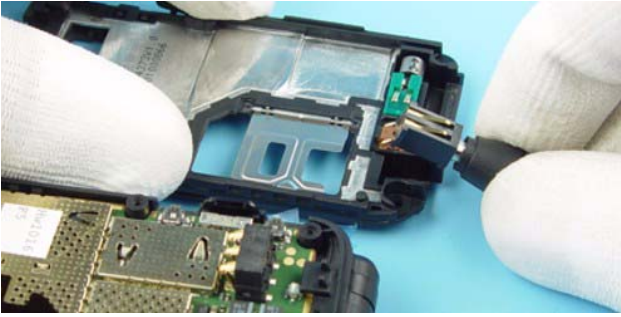
4.) Unscrew the six Torx Plus® size 6 screws of **C-Cover**. **For assembly, the reverse order and the torque driver with a torque of 20Ncm has to be used.**



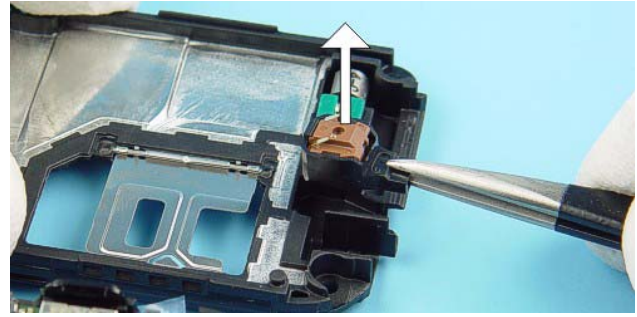
5.) Use the SRT-6 as a lever to open the snaps of the **C-Cover**.



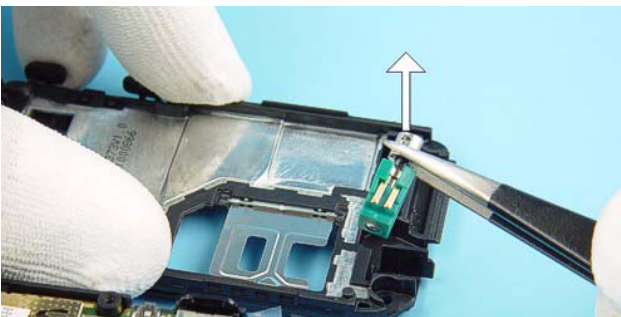
6.) Remove the **C-Cover Assy** carefully. Note not to damage the **Power Button** and the **Function Key**.



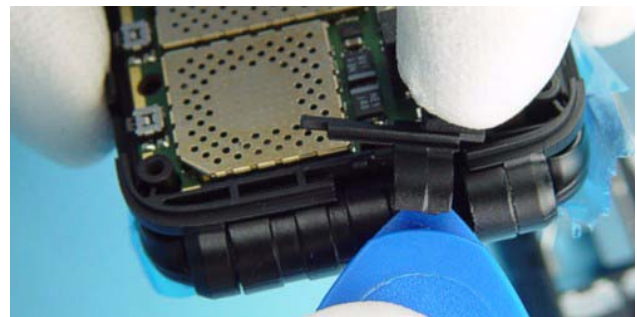
7.) Remove the **DC-Jack** with a DC plug.



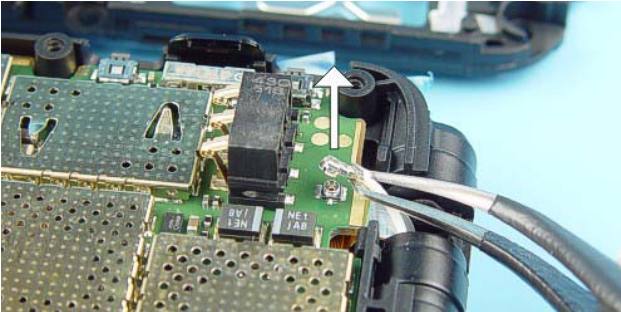
8.) Use tweezers to pull up the **Microphone**.



9.) Use tweezers when removing the **Vibra Motor**.



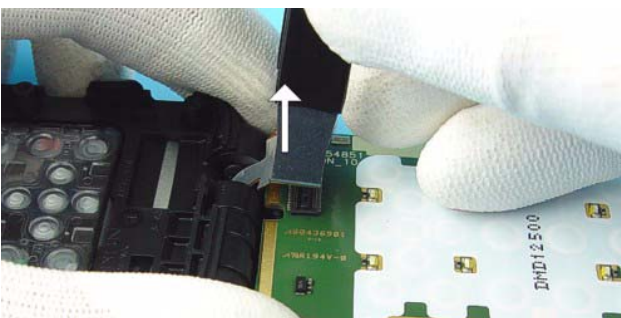
10.) SRT-6 can be used to remove the **A-Cover Hinge Cap of Lower block**.



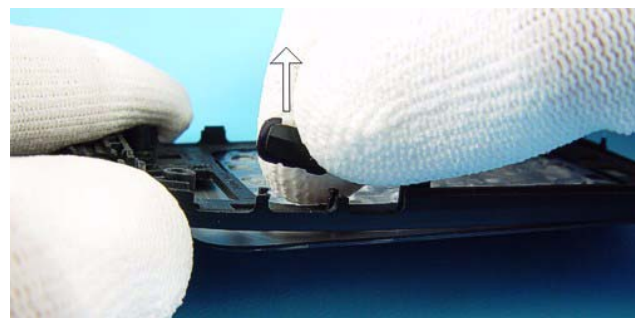
11.) Open the coax connector of the **Engine Module** carefully by using angled tweezers.



12.) Turn the **Engine Module** as shown in the picture. Use the **C-Cover Assy** as support for **Engine Module**.



13.) Open the flex connector of the **Engine Module** carefully by using SS-34.



14.) Remove the **IRDA Window**. Note the right position when assembling.



15.) Remove the **Keymat** from the **A-Cover Lower** carefully.

Disassembly instructions of upper block

Also see the video clips on care point.



15.) Pick up the **Screw Head Caps** with dental tool. Always use new **Caps** when assembling.



16.) Unscrew the two Torx Plus® size 6 screws. **For assembly, the reverse order and the torque driver with a torque of 20Ncm have to be used.**



17.) Place the SRT-6 between **B-Cover** and the **A-Cover Upper Block** and shift it carefully along the edge. Use it like a blade with moderate force to prevent damages at the covers.



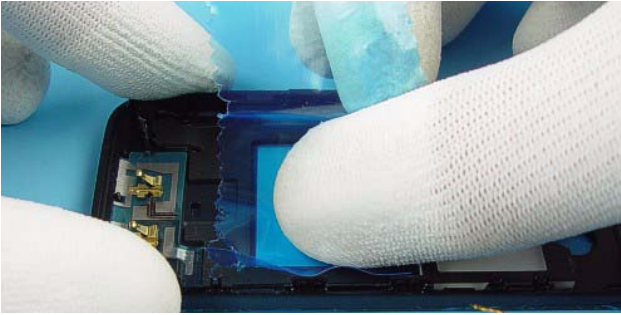
18.) The same procedure on the topside...



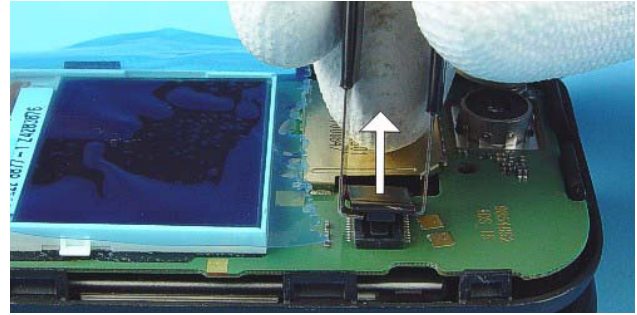
19.) ...and the same procedure on the other side.



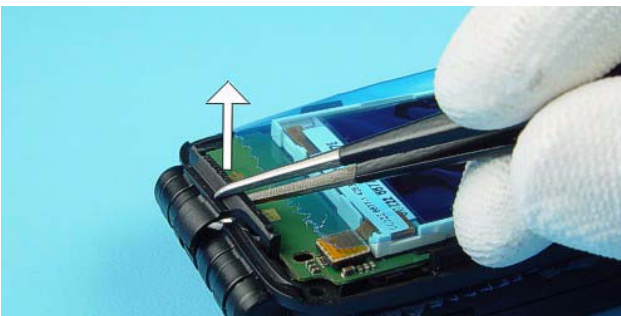
20.) Now, the **A-Cover** can be pulled up.



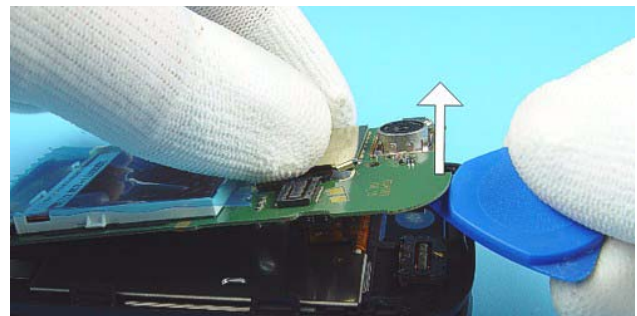
21.) Fit protective film to the inner side of the window.



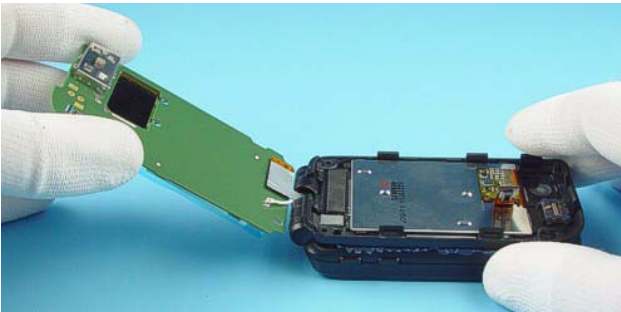
22.) Note to protect the **Outer LCD** with a film. Open the **Inner LCD** connector by using the SS-34.



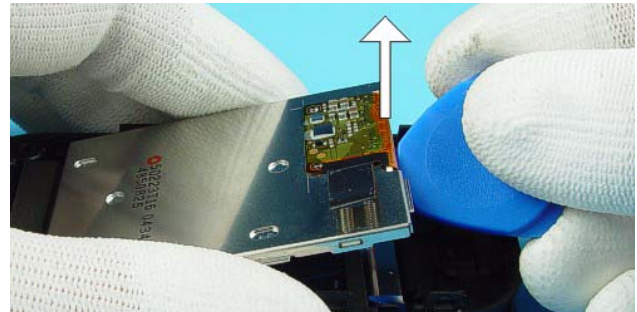
23.) Use tweezers when removing the **A-Cover Hinge Cap** from **Upper Block**.



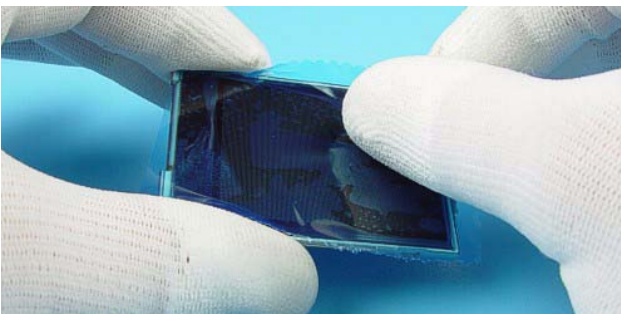
24.) Use SRT-6 to lift out **UI-PWB**.



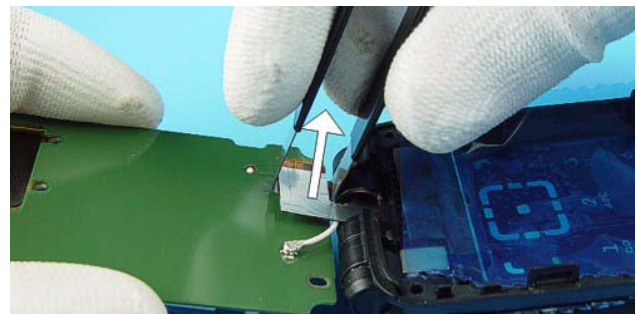
25.) Turn the **UI-PWB** as shown in the picture.



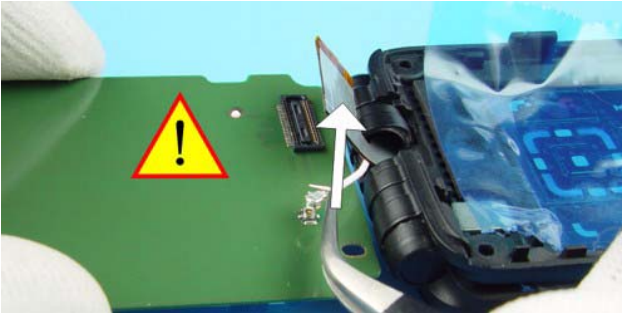
26.) First lift the **Inner LCD** with the SRT-6 and then remove it carefully.



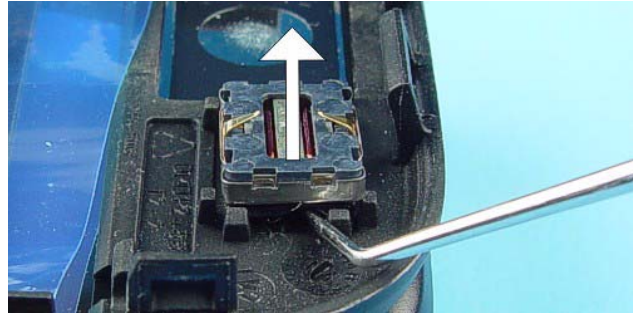
27.) Protect **Inner LCD** with a film to avoid dust and scratches.



28.) Open the flex connector of the **UI-PWB** carefully by using the SS-34.

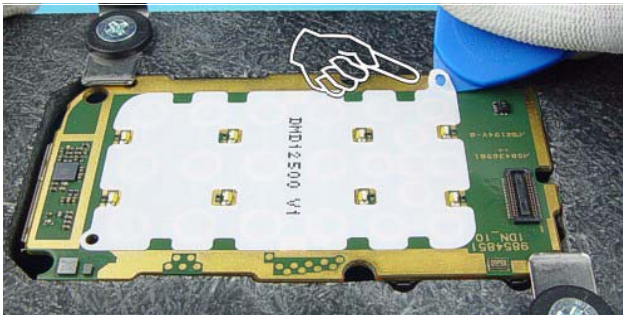


29.) Open the coax connector of the **UI-PWB** carefully by using tweezers.

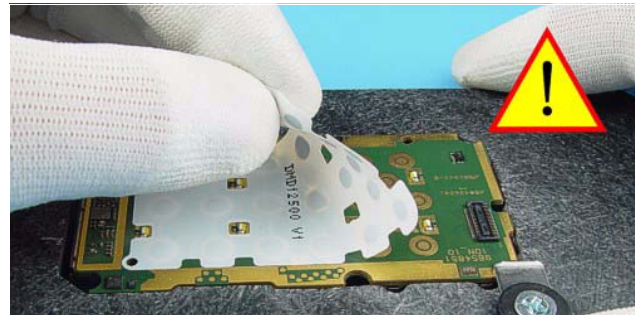


30.) The **Speaker** is attached with an adhesive **Speaker Gasket** to the **A-Cover Upper Block**. Use the dental tool to remove the **Speaker** and be sure to remove the remaining adhesive.

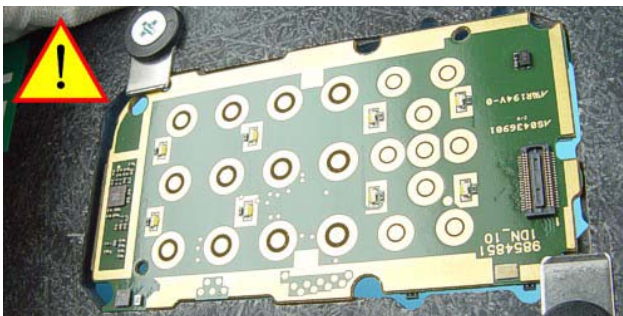
Domesheet exchange instructions



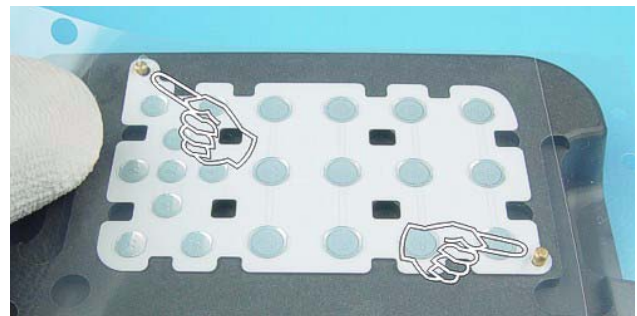
1.) Place the **Engine Module** into the Soldering Jig. Use SRT-6 to lift a bit the **Domesheet** from **Engine Module**. Always start on the shown side.



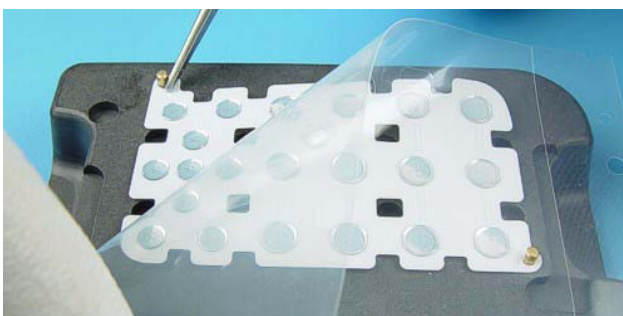
2.) Remove the defective **Domesheet** carefully. Note not to damage the **LEDs**.



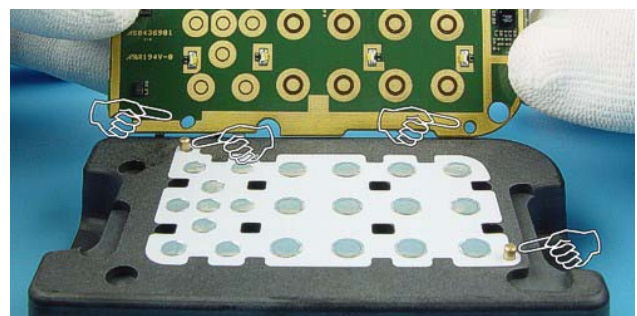
3.) Check the surface of the **Engine Module** for remaining adhesive and clean it if necessary.



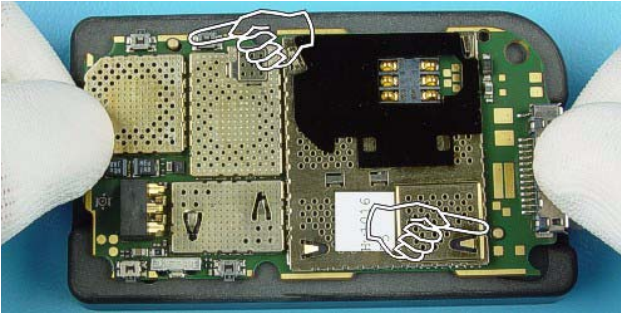
4.) Put the new **Domesheet** onto the Domesheet Assembly Jig. Note the guide pins.



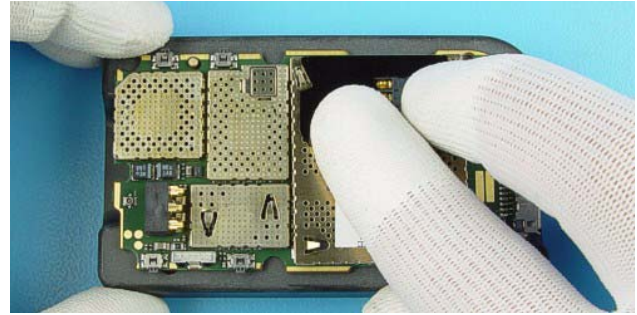
5.) Use tweezers for support when removing the carrier foil.



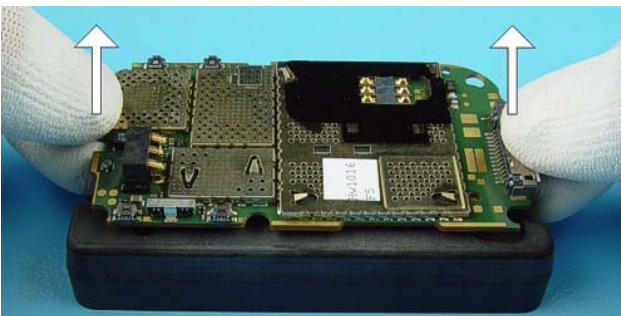
6.) Note the guide pins and the corresponding openings before to place the **Engine Module** on the Jig.



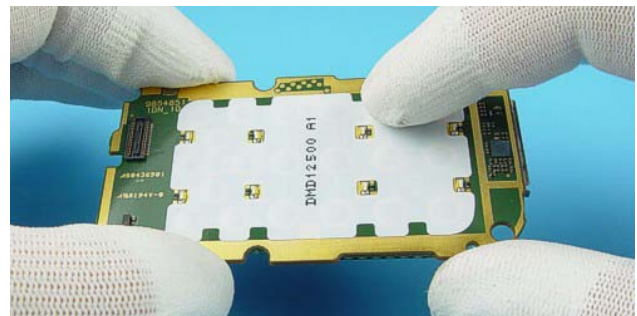
7.) Place the **Engine Module** on the Jig as shown in the picture.



8.) Press on the **Engine Module** carefully and evenly.



9.) Lift the **Engine Module** with the new **Domesheet** from the Jig.



10.) Check that the **Domesheet** is correctly stuck to the **Engine Module**.